

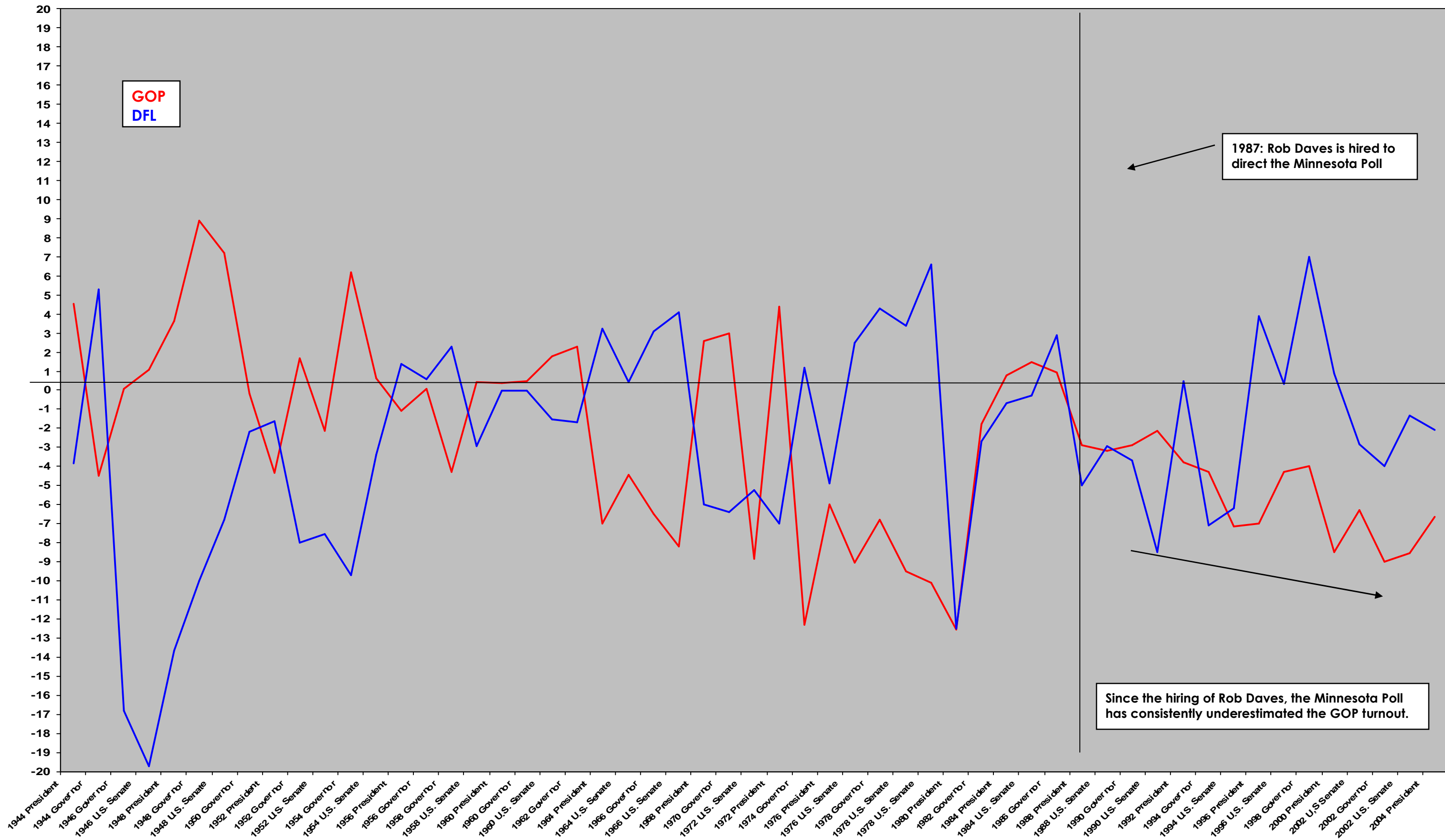
# ACCURACY OF STAR TRIBUNE'S FINAL MINNESOTA POLL: 1944 TO 2004 ELECTIONS

ELECTION	MINNESOTA POLL GOP <sup>1</sup>	MINNESOTA POLL DFL	FINAL GOP <sup>2</sup> (+/-)	FINAL DFL (+/-)	MINNESOTA POLL OTHER	FINAL OTHER (+/-)
1944 President	Thomas Dewey: 51.4%	Franklin D. Roosevelt 48.6%	46.86% (+4.54)	52.41% (-3.81)		
1944 Governor	Edward Thye: 57%	Byron Allen: 43%	61.5% (-4.5)	37.7% (+5.3)		
1946 U.S. Senate	Edward Thye: 60%	Theodore Jorgenson: 23%	58.92% (+1.08)	39.78 (-16.78)		
1946 Governor	Luther Youngdahl: 59%	Harold Barker: 20%	58.9% (+.1)	39.7% (-19.7)		
1948 President	Thomas Dewey: 43.5%	Harry Truman: 43.5%	39.89% (+3.61)	57.16% (-13.66)		
1948 Governor	Luther Youngdahl: 62%	Charles Halsted: 25%	53.1% (+8.9)	45% (-10)		
1948 U.S. Senate	Joe Ball: 47%	Hubert Humphrey: 53%	39.81% (+7.19)	59.78% (-6.78)		
1950 Governor	Luther Youngdahl: 60.5%	Harry Peterson: 36%	60.7% (-.2)	38.2% (-2.2)		
1952 President	Dwight Eisenhower: 51%	Adlai Stevenson: 42.5%	55.33% (-4.33)	44.11% (-1.61)		
1952 Governor	C. Elmer Anderson: 57%	Orville Freeman: 36%	55.3% (+1.7)	44% (-8)		
1952 U.S. Senate	Edward Thye: 54.5%	William Carlson: 35%	56.63% (-2.13)	42.53% (-7.53)		
1954 Governor	C. Elmer Anderson: 53%	Orville Freeman: 43%	46.8% (+6.2)	52.7% (-9.7)		
1954 U.S. Senate	Val Bjornson: 41.5%	Hubert Humphrey: 53%	42.11% (-.61)	56.38% (-3.38)		
1956 President	Dwight Eisenhower: 52.5%	Adlai Stevenson: 47.5%	53.6% (-1.1)	46.1% (+1.4)		
1956 Governor	Ancher Nelsen: 48%	Orville Freeman: 52%	48.1% (even)	51.4% (+.6)		
1958 Governor	George MacKinnon: 38%	Orville Freeman: 59%	42.3% (-4.3)	56.7% (+2.3)		
1958 U.S. Senate	Edward Thye: 47%	Eugene McCarthy: 50%	46.58% (+.42)	52.95% (-2.95)		
1960 President	Richard Nixon: 49.5%	John Kennedy: 50.5%	49.1% (+.4)	50.5% (even)		
1960 Governor	Elmer L. Andersen: 51%	Orville Freeman: 49%	50.5% (+.5)	49% (even)		
1960 U.S. Senate	P. Kenneth Peterson: 44%	Hubert Humphrey: 56%	42.20% (+1.8)	57.53% (-1.53)		
1962 Governor	Elmer L. Andersen: 52%	Karl Rolvaag: 48%	49.70% (+2.3)	49.71% (-1.7)		
1964 President	Barry Goldwater: 29%	Lyndon Johnson: 67%	36% (-7)	63.76% (+3.24)		
1964 U.S. Senate	Wheelock Whitney: 35%	Eugene McCarthy: 61%	39.42% (-4.42)	60.58% (+.42)		
1966 Governor	Harold LeVander: 46%	Karl Rolvaag: 50%	52.5% (-6.5)	46.9% (+3.1)		
1966 U.S. Senate	Robert Forsythe: 37%	Walter Mondale: 58%	45.21% (-8.21)	53.94% (+4.06)		
1968 President	Richard Nixon: 44%	Hubert Humphrey: 48%	41.4% (+2.6)	54% (-6)		
1970 Governor	Douglas Head: 48.5%	Wendy Anderson 48%	45.5% (+3)	54.4% (-6.4)		
1970 U.S. Senate	Clark MacGregor: 44.5%	Hubert Humphrey: 52.5%	41.62% (+2.88)	57.75% (-5.25)		
1972 President	Richard Nixon: 56%	George McGovern: 39%	51.6% (+4.4)	46% (-7)		
1972 U.S. Senate	Philip Hansen: 34%	Walter Mondale: 64%	42.86% (-8.86)	56.67% (7.33)		
1974 Governor	John Johnson: 17%	Wendy Anderson: 64%	29.3% (-12.3)	62.8% (+1.2)		
1976 President	Gerald Ford: 36%	Jimmy Carter: 50%	42% (-6)	54.9% (-4.9)		
1976 U.S. Senate	Jerry Brekke: 16%	Hubert H. Humphrey: 70%	25.03% (-9.03)	67.51% (+2.49)		
1978 Governor	Al Quie: 45.5%	Rudy Perpich: 49.5%	52.3% (-6.8)	45.2% (+4.3)		
1978 U.S. Senate	David Durenberger: 52%	Bob Short: 38%	61.5% (-9.5)	34.6% (+3.4)		
1978 U.S. Senate	Rudy Boschwitz: 46.5%	Wendy Anderson: 47%	56.6% (-10.1)	40.4% (+6.6)		
1980 President	Ronald Reagan: 30%	Jimmy Carter: 34%	42.56% (-12.56)	46.5% (-12.5)	John Anderson: 18%	8.5 (+9.5)
1982 Governor	Wheelock Whitney: 38%	Rudy Perpich: 56%	39.8% (-1.8)	58.7% (-2.7)		
1982 U.S. Senate	David Durenberger: 52%	Mark Dayton: 43%	52.77% (+.77)	46.40% (-3.4)		
1984 President	Ronald Reagan: 51%	Walter Mondale: 49%	49.5% (+1.5)	49.7% (-.7)		
1984 U.S. Senate	Rudy Boschwitz: 59%	Joan Growe: 41%	58.08% (+.92)	41.28% (-.28)		
1986 Governor	Cal Ludeman: 35%	Rudy Perpich: 59%	43.0% (-8)	56.1% (+2.9)		
1988 President	George Bush: 43%	Michael Dukakis: 48%	45.9% (-2.9)	53% (-5)		
1988 U.S. Senate	David Durenberger: 53%	Skip Humphrey: 38%	56.18% (-3.18)	40.92% (-2.92)		
1990 Governor	Arne Carlson: 44%	Rudy Perpich: 43%	50.1% (-6.1)	46.7% (-3.7)		
1990 U.S. Senate	Rudy Boschwitz: 51%	Paul Wellstone: 42%	47.86% (2.14)	50.49% (-8.49)		
1992 President	George Bush: 28%	Bill Clinton: 44%	31.8% (-3.8)	43.5% (+.5)	Ross Perot: 18%	23.98% (-5.98)
1994 Governor	Arne Carlson: 59%	John Marty 27%	63.3% (-4.3)	34.1% (-7.1)		
1994 U.S. Senate	Rod Grams: 42%	Ann Wynn: 38%	49.12% (-7.12)	44.17% (-6.17)		
1996 President	Bob Dole: 28%	Bill Clinton: 55%	35% (-7)	51.1% (+3.9)		
1996 U.S. Senate	Rudy Boschwitz: 37%	Paul Wellstone: 50%	41.29% (-4.29)	50.32% (+.32)		
1998 Governor	Norm Coleman: 30%	Skip Humphrey: 35%	34% (-4)	28% (+7)	Jesse Ventura: 27%	37% (-10)
2000 President	George W. Bush: 37%	Al Gore: 47%	45.5% (-8.5)	47.9% (+.9)		
2000 U.S. Senate	Rod Grams: 37%	Mark Dayton: 46%	43.29 (-6.29)	48.83% (-2.83)		
2002 Governor	Tim Pawlenty: 35%	Roger Moe: 32%	44% (-9)	36% (-4)	Tim Penny: 16%	16% (even)
2002 U.S. Senate	Norm Coleman: 41%	Walter Mondale: 46%	49.53% (-8.53)	47.34% (-1.34)		
2004 President	George W. Bush: 41%	John Kerry: 49%	47.61% (-6.61)	51.09% (-2.09)		

<sup>1</sup> Source: Poll numbers are the final published Minnesota Poll by the *Star Tribune/Minneapolis Tribune*.

<sup>2</sup> Source: Percentages based on election results in various editions of the Minnesota Legislative Manual

# GRAPH DETAILING THE AMOUNT BY WHICH THE MINNESOTA POLL INCORRECTLY PREDICTED THE OUTCOME OF THE ELECTION: 1944 TO 2004



## SINCE ROB DAVES WAS HIRED TO DIRECT THE MINNESOTA POLL:

- The final GOP poll number was on average 5.20 percent points under the actual GOP result in the election. -5.20 percentage points is outside the margin of error in the Minnesota Poll.
- The final DFL poll number was on average 2.06 percent points under the actual DFL result in the election. -2.06 percentage points is inside the margin of error in the Minnesota Poll.
- Since 1998, the Minnesota Poll has underestimated the GOP result in elections by an average of 7.26 percent but underestimated the DFL result by only .054 percent.
- In 1998, the final Minnesota Poll predicted that Skip Humphrey would get 35 percent of the vote and win. On election day, Skip Humphrey finished in last place with 28 percent of the vote and Jesse Ventura, who was listed in third place in the final Minnesota Poll with 27 percent won the election with 37 percent.
- In 2000, the final Minnesota Poll predicted that Governor George W. Bush would get 37 percent of the vote and Vice President Al Gore would get 47 percent. The headline read: "Gore Takes 10-point lead in state." On election day, Bush received 45.5 percent and Gore received 47.9 percent, a margin of 2.4 percent.
- In 2002, the final Minnesota Poll had Walter Mondale with a 5-point lead over Norm Coleman. On election day, Norm Coleman received 49.53 percent of the vote, over 8.53 percent more than the Minnesota Poll predicted. The *Pioneer Press's* final poll predicted Norm Coleman's victory by within three percentage points.